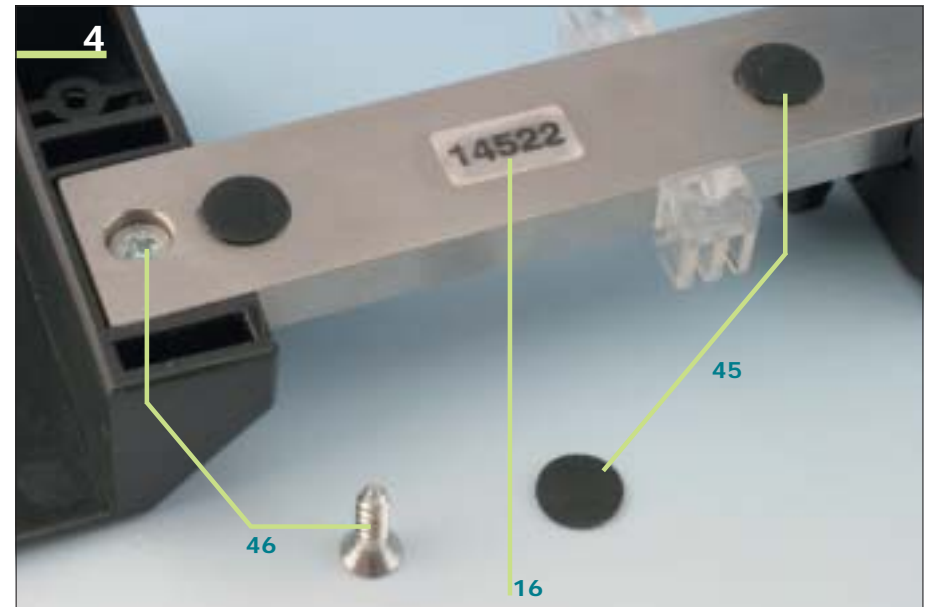
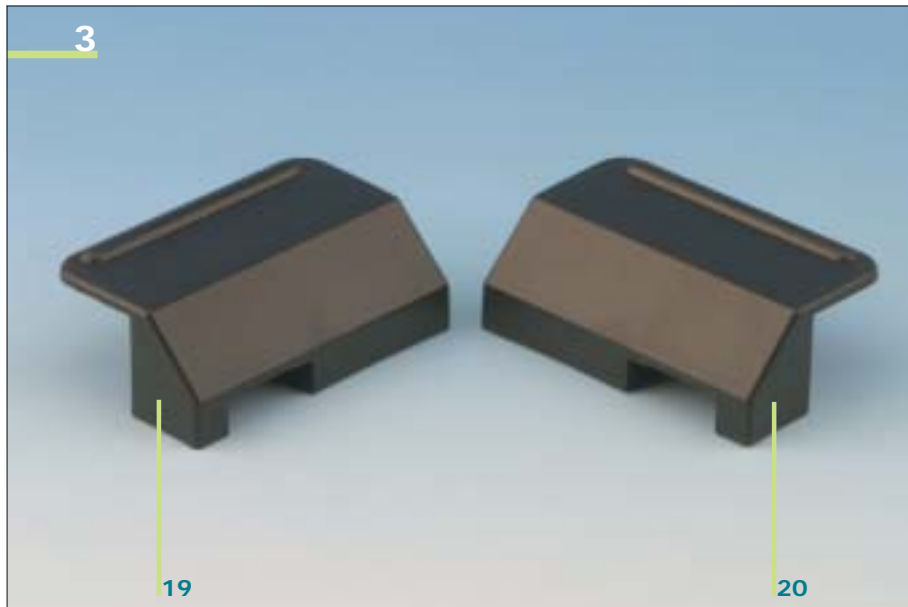
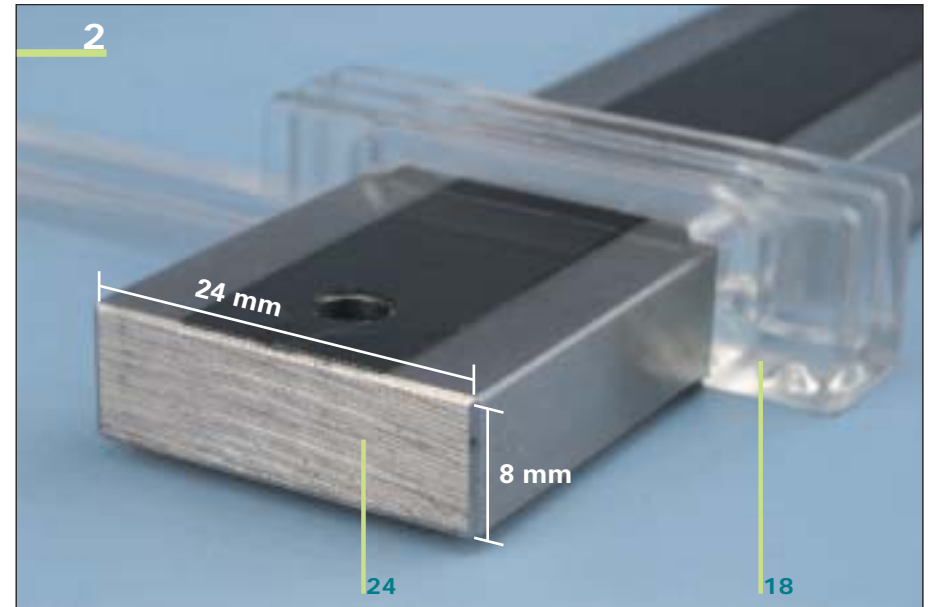
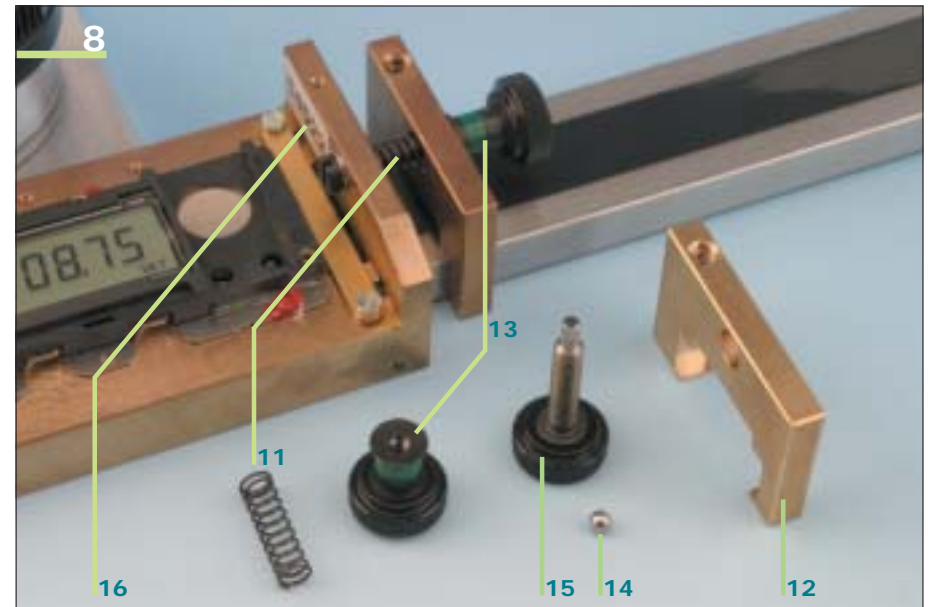
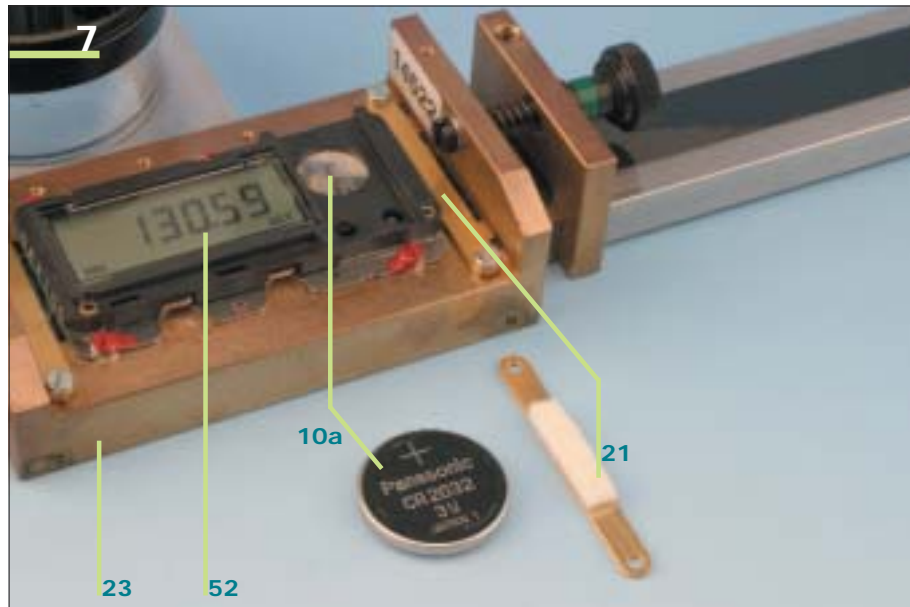
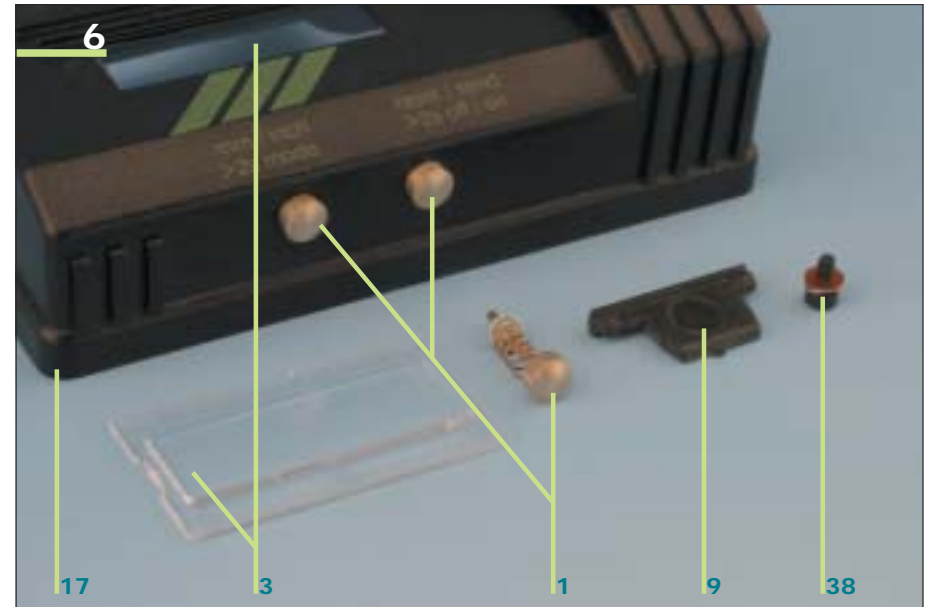
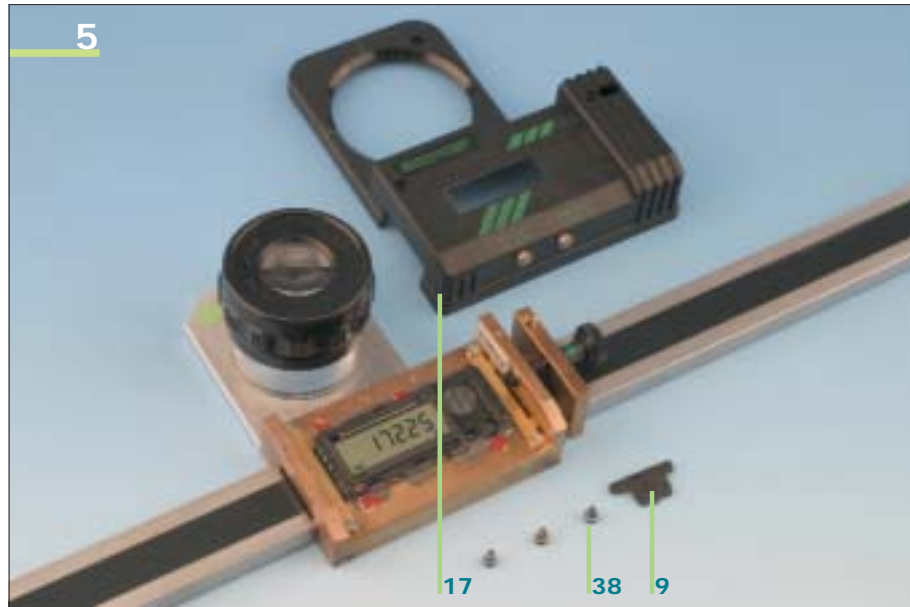
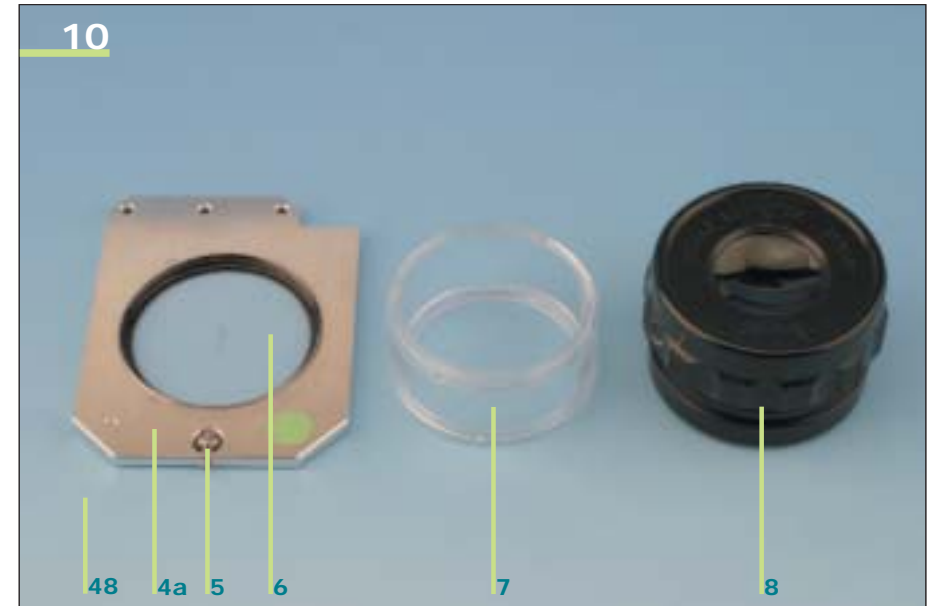
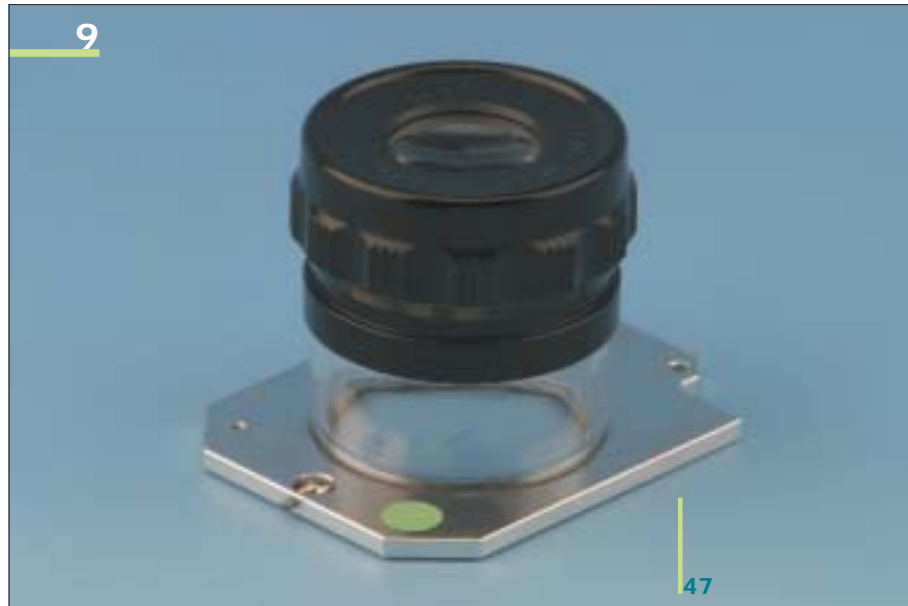


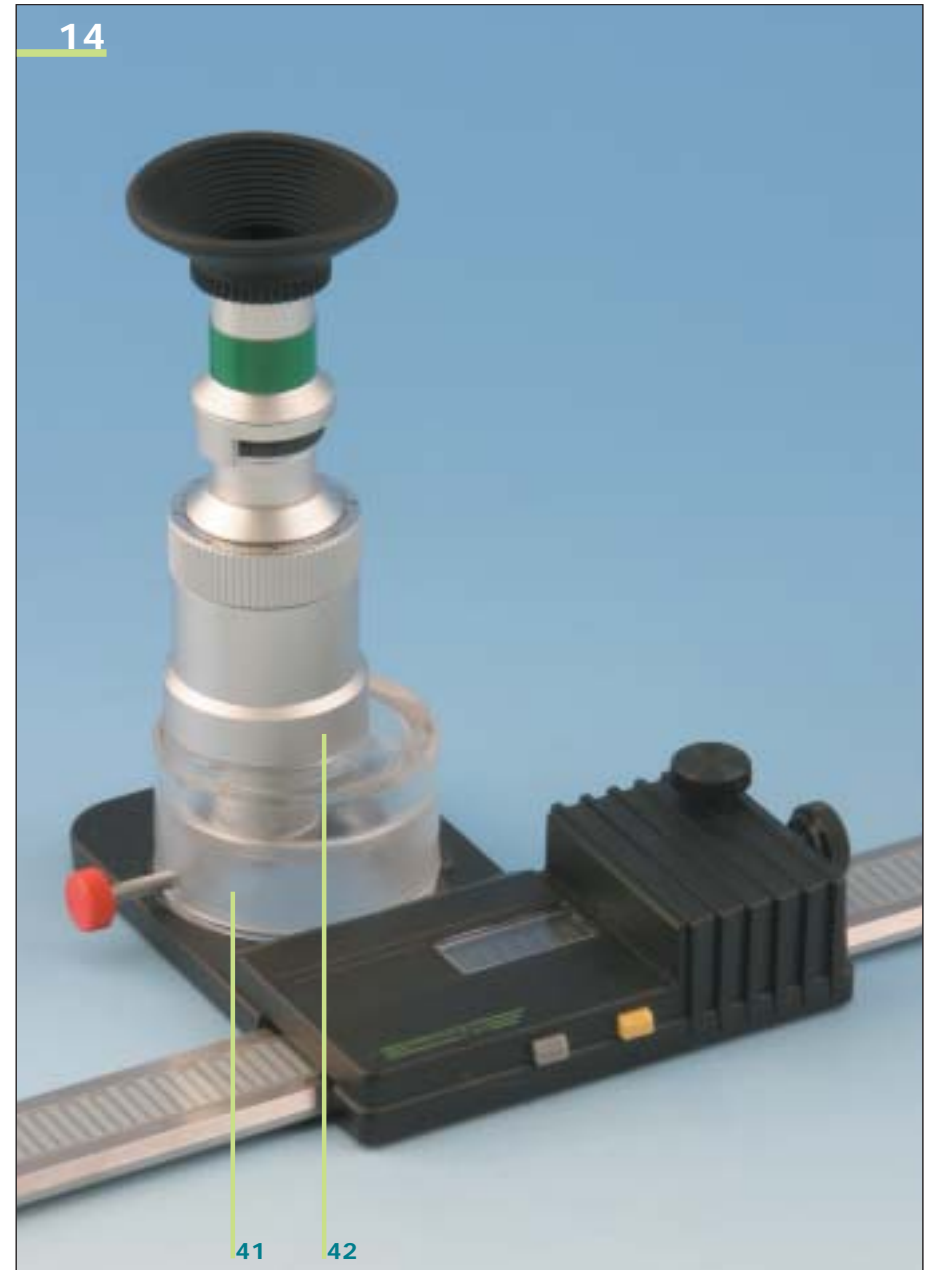
# Electronic Scale (V4 to V7): allocation table



# Electronic Scale (V4 to V7): allocation table







## Electronic Scale (V4 to V7): allocation table

5/5  
2018-12-12

Pict.	Pos.:	Item-description		Item-No.
2	18	Positioning slide		ES.... 4058
2	24	Steel track	X	ES.... 4nnn
3	19	Left handle		ES.... 4056
3	20	Right handle		ES.... 4057
4	16	Plate: serial number		ES....
4	45	Rubber pad		ES.... 4035
4	46	Screw 3.9x13		ES.... 4237
5/6	9	Protective insert		ES.... 4081
5/6	17	Casing		ES.... 4062
5/6	38	Screw (set)		ES.... 4235
6	1	Button (set incl. spring)		ES.... 4264
6	3	Display-window		ES.... 4082
7	10a	Battery 3V, CR2032		ES.... 4091
7	21	Wiper for capacity strip		ES.... 4085
7	23	Carriage	X	ES.... 4nnn
7	52	Electronic-module	X	ES.... v092
8	11	Spring		ES.... 4093
8	12	Clamp slide		ES.... 4070
8	13	Fine adjustment nut		ES.... 4067
8	14	Ball		ES.... 4094
8	15	Locking screw		ES.... 4066
8	16	Plate: serial number		ES....
9	47	Mounting plate incl. scale plate standard and lens 10x		ES.... 4246
9	47	Mounting plate incl. scale plate PCB and lens 10x		ES.... 4247
10	4a	Mounting plate incl. roller		ES.... 4251
10	5	Roller		ES.... 4090
10	6	Scale plate: see pictures 11 and 12	X	ES....
10	7	Acrylic glass ring	?	ES.... 4089
10	8	Lens 10x		ES.... 4031
10	48	Mounting plate incl. scale plate standard		ES.... 4032
10	48	Mounting plate incl. scale plate PCB		ES.... 4033
11	6	Scale plate standard	X	ES.... 4197
12	6	Scale plate PCB	X	ES.... 4202
13	4b	Mounting plate for microscope (without microscope!)		ES.... 4261
13	42	Microscope 25x		ES.... 4144
13	42	Microscope 50x		ES.... 4145
13	43	Stand for microscope		ES.... 4143
14	41	Adapter (for microscope)		ES.... 4218

- x Self-replacement not possible! Item to be replaced by manufacturer only!
- ? Please contact us to clarify version and replacement possibilities!